

# Manual



**Model NO:**  
**TV-MOUN-WALL-260-BK**  
**TV Wall Mount**

## Notice



Read this assembly manual carefully, and verify that you have all the parts listed before you begin. Keep your assembly manual for future reference.



Protect finishes by placing furniture pieces on a soft carpeted surface during assembly.



Please wear your gloves before installation to avoid injury.

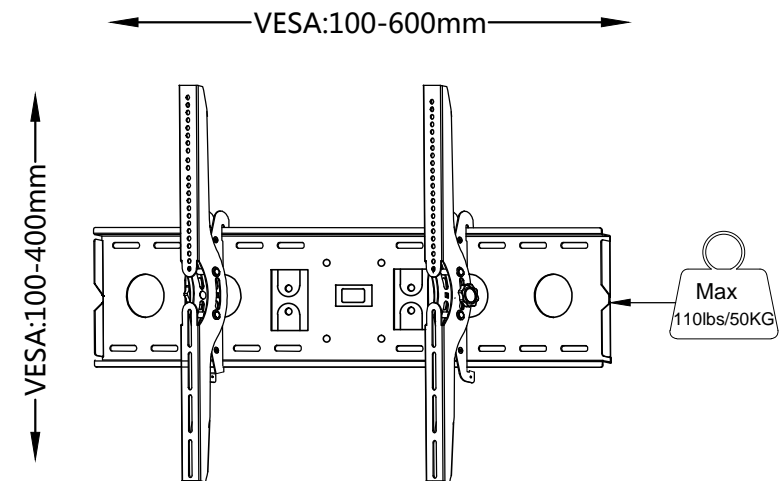


This TV mount must be securely attached to the vertical wall. If the mount is not properly installed it may fall, resulting in possible injury and/or damaged.

### NOTE

The mounting components and hardware supplied in this package are not designed for installations to walls with steel studs or to cinder block walls. If the hardware you need for your installation is not included, please consult your local hardware store for proper mounting hardware for the application.

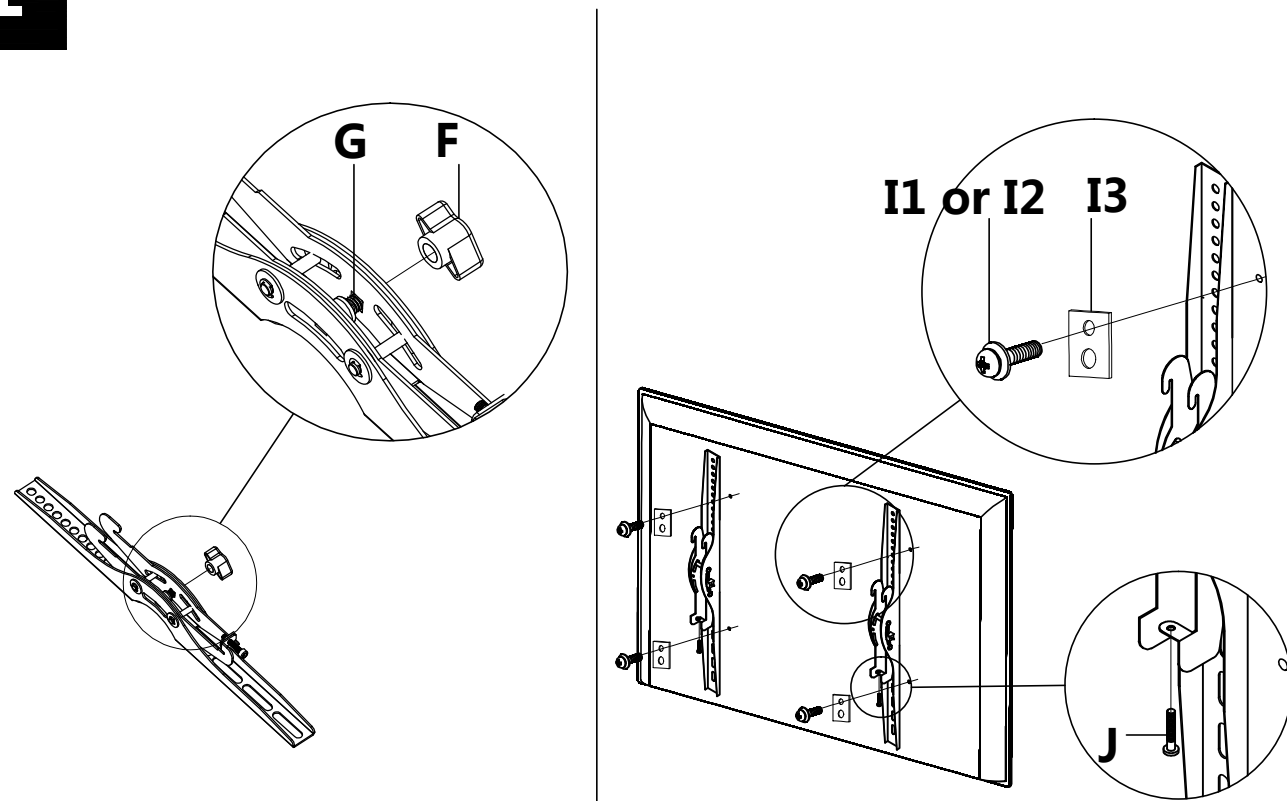
Tools Required	■ 5/32"(4mm) Drill Bit	■ 3/8"(10mm) Masonry Bit	■ Wrench or Socket Set
	■ Phillips Screwdriver	■ Stuf Finder	■ Carpenter's Level



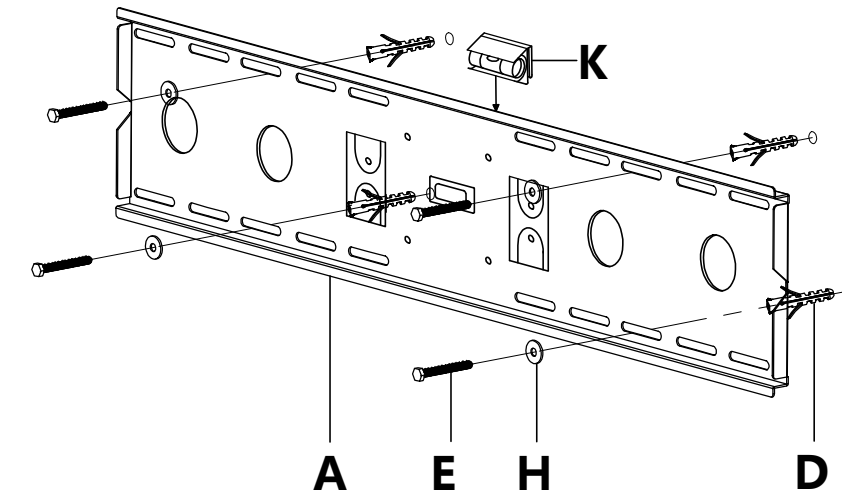
**For 32-70 Inch TV**

## Parts list

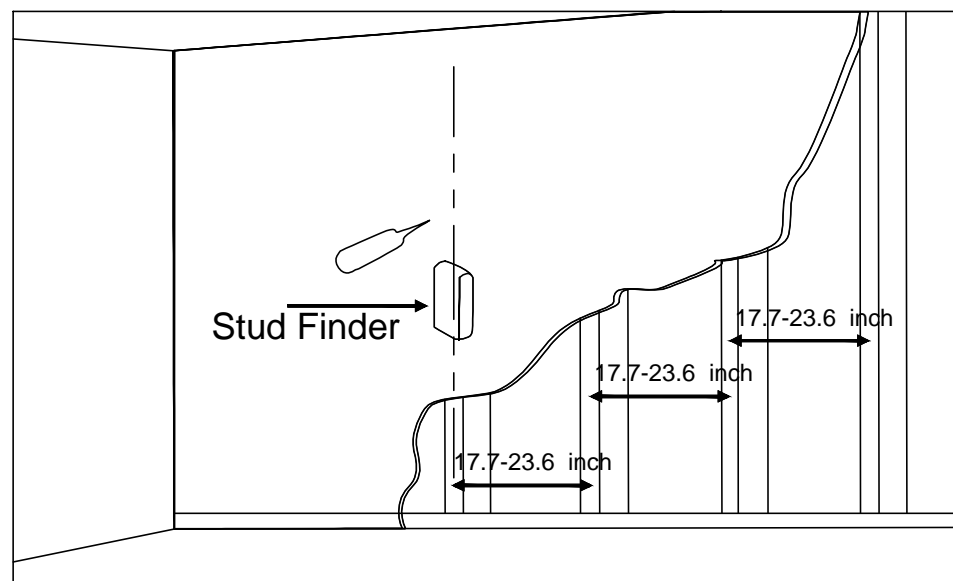
<b>A. x1</b> 	<b>B. x1</b> 	<b>C. x1</b> 
<b>D. x4</b> 	<b>E. x4</b> 	<b>F. x2</b> 
<b>G. x2</b> 	<b>H. x4</b> 	<b>I.</b>  <b>I1 x4</b>  <b>I2 x4</b>  <b>I3 x4</b>
<b>J. x2</b> 	<b>K. x1</b> 	

**1****2**

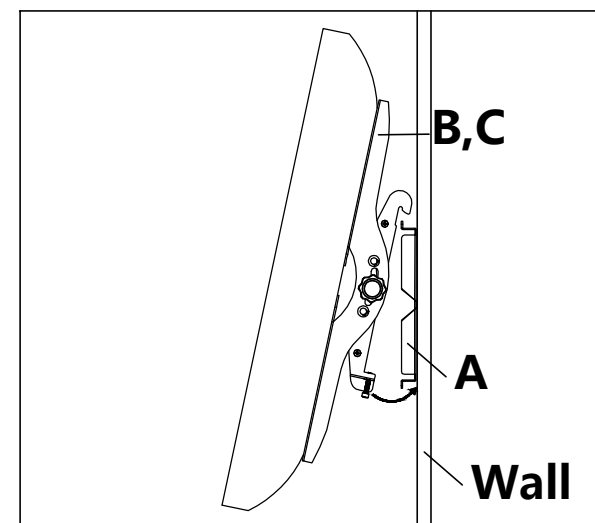
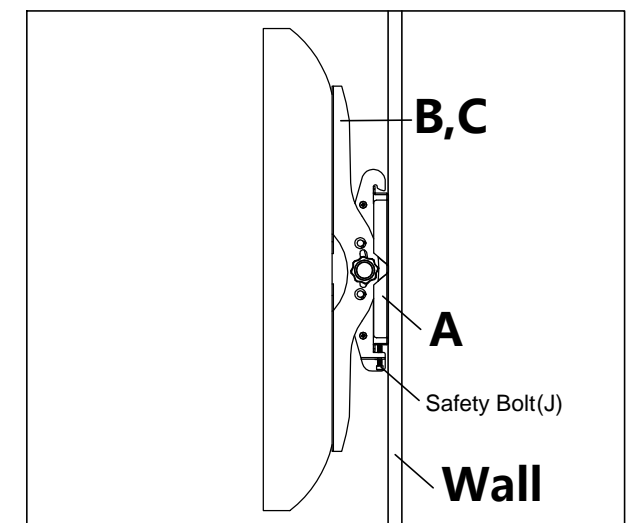
Please install the level on the plate to adjust the horizontal height.

**Diagram 2A****Brick, Solid Concrete and Concrete Block mounting :**

Use the Wall Plate(A) as a template to mark 4 hole locations on the wall. Two in the top row of slots and two more in the bottom row. Pre-Drill these holes with a 3/8"(10mm) masonry bit to at least 2.4"(60mm) in depth. Insert a Concrete Anchor(D) into each of these holes. Make sure the anchor is seated completely flush with the concrete surface even if there is a layer of drywall or other material in front. Attach the Wall Plate to the wall using 4pcs Lag Bolts(E), 4pcs Lag Bolt Washers (H) and 4pcs Concrete Anchor(D), shown in Diagram 2A.

**3****Diagram 2B****Wood Stud mounting:**

The Wall Plate(A) **must be mounted to two wood studs at least 16"(406mm) apart**. Generally the wood stud is 17.7"(450mm) or 23.6"(600mm). Use a stud finder to locate two adjacent studs. It is a good idea to verify where the studs are located with an awl or thin nail shown in Diagram 2B. Pre-drill a 2.4"(60mm) deep hole at the desired height in each stud using a 5/32"(4mm) drill bit. Make sure these holes are in the center area of the studs and level with each other. Use the Wall Plate as a template to mark the location of the second hole in each stud. Drill 2.4"(60mm) deep holes using the 5/32"(4mm) drill bit in the marked locations. Attach the Wall Plate to the wall using the 4pcs Lag Bolts(E) and 4pcs Lag Bolt Washers(H).

**4****Diagram 3A****Diagram 3B**

First hook the Monitor Brackets(B,C) over the top of the Wall Plate(A), then let the bottom of the Monitor Brackets rotate to the bottom of the Wall Plate as shown in the Diagram 3A. Use the screw driver to tighten the safety bolts(J). Then the Monitor Bracket will sit behind the bottom tab on the Wall Plate as shown in the Diagram 3B.